



2 0 1 2 C  
designed by  
jocelyn j. tunney

# Rhodopea

baby blanket

photos taken at Meadowsweet Vintage: [www.meadowsweetvintageshop.com](http://www.meadowsweetvintageshop.com)



## FINISHED SIZE

About 35¼" wide and 43" long.

## YARN

O-WOOL BALANCE BULKY (50% certified organic merino, 50% certified organic cotton; 106 yds/97m [100g/3.5 oz]): 8 skeins, shown in 5002 Rhodonite.

## NEEDLES

Sizes 10½ and 11 (6.5 and 8 mm): 32" circular.

Adjust needle sizes if necessary to obtain the correct gauge.

## NOTIONS

Tapestry needle.

*Tunney Wool Company*

*p. 1*  
12/30/12

p 888.673.0260 - f 888.841.9736 - [info@tunneywoolcompany.com](mailto:info@tunneywoolcompany.com) - [www.o-wool.com](http://www.o-wool.com)

All efforts were made to make this pattern error-free. For questions or support, please email us. © Tunney Wool Company 2012 - Not to be reproduced or re-knit for profit.

## GAUGE

12 sts and 16 rows = 4" in Center Tulip Pattern with larger needle. Take time to save time, check your gauge.

## ABBREVIATIONS:

BO: bind off

CO: cast on

k: knit

k2tog: knit 2 stitches together (1 st decreased)

MB: (make bobble) knit into the front, back, front of the same st, turn—3 sts; p3, turn, k3tog—1 st rem

p: purl

p2tog: purl 2 stitches together (1 st decreased)

patt: pattern

rep: repeat

RS: right side

ssk: (slip, slip, knit) slip 2 stitches, 1 at a time, knitwise to the right needle; return stitches to left needle in turned position and knit them together through the back loops (1 st decreased)

ssp: (slip, slip, purl) slip 2 stitches, 1 at a time, knitwise to the right needle; return stitches to left needle in turned position and purl them together through the back loops (1 st decreased)

st(s): stitch(es)

yo: yarn over (1 st increased)

## PATTERN STITCHES

*Gartr Stitch (Gtr St):*

Row 1: Knit.

Rep Row 1 for pattern.

*Beginning Tulip Pattern:* (multiple of 16 sts + 27)

Row 1 (RS): K5, yo, ssp, p6, \*k1, p7, yo, ssp, p6; rep from \* 4 more times, k1, p6, p2tog, yo, k5.

Row 2: K5, p1, \*k7, p1; rep from \* to last 5 sts, k5.

Row 3: k7, yo, p2tog, p4, \*k1, p4, p2tog, yo, k3, yo, p2tog, p4; rep from \* 4 more times, k1, p4, p2tog, yo, k7.

Row 4: Rep Row 2.

Row 5: K5, yo, p2tog, p6, \*k1, p6, ssp, yo, p7; rep from \* 4 more times, k1, p6, ssp, yo, k5.

Row 6: K13, p1, \*k15, p1; rep from \* 4 more times, k13.

Work Rows 1–6 for pattern.

*Center Tulip Pattern:* (multiple of 16 sts + 27)

Row 1 (RS): K5, p6, k2tog, yo, \*k1, yo, ssk, p11, k2tog, yo; rep from \* 4 more times, k1, yo, ssk, p6, k5.

Row 2: K11, \*p5, k11; rep from \* to end.

Row 3: K5, p5, k2tog, k1, yo, \*k1, yo, k1, ssk, p9, k2tog, k1, yo; rep from \* 4 more times, k1, yo, k1, ssk, p5, k5.

Row 4: K10, p7, \*k9, p7; rep from \* 4 more times, k10.

Row 5: K5, p4, k2tog, k2, yo, \*k1, yo, k2, ssk, p3, k1, p3, k2tog, k2, yo; rep from \* 4 more times, k1, yo, k2, ssk, p4, k5.

Row 6: K9, p2, k2, p1, \*k2, p2, k3, p2, k3, p2, k2, p1; rep from \* 4 more times, k2, p2, k9.

Row 7: K5, p3, k2tog, k1, p2, yo, \*k1, yo, p2, k1, ssk, p2, k1, p2, k2tog, p2, yo; rep from \* 4 more times, k1, yo, p2, k1, ssk, p3, k5.

Row 8: K8, p1, k4, p1, \*k4, p1, [k2, p1] twice, k4, p1; rep from \* 4 more times, k4, p1, k8.

Row 9: K5, p8, \*MB, p7, k1, k7; rep from \* 4 more times, MB, p8, k5.

Row 10: K14, \*k7, p1, k8; rep from \* 4 more times, k13.

Row 11: K5, p8, \*p6, k2tog, yo, k1, yo, ssk, p5; rep from \* 4 more times, p9, k5.

Row 12: K14, \*k5, p5, k6; rep from \* 4 more times, k13.

Row 13: K5, yo, ssp, p6, \*p5, k2tog, [k1, yo] twice, k1, ssk, p4; rep from \* 4 more times, p7, p2tog, yo, k5.

*Tunney Wool Company*

*p. 2*  
12/30/12

p 888.673.0260 - f 888.841.9736 - info@tunneywoolcompany.com - www.o-wool.com

All efforts were made to make this pattern error-free. For questions or support, please email us. © Tunney Wool Company 2012 - Not to be reproduced or re-knit for profit.



Row 14: K4, p1, k8, \*k4, p7, k5; rep from \* 4 more times, k7, p1, k5.

Row 15: K7, yo, p2tog, p4, \*k1, p3, k2tog, k2, yo, k1, yo, k2, ssk, p3; rep from \* 4 more times, k1, p4, p2tog, yo, k7.

Row 16: K5, p1, k7, p1, \*k3, p2, k2, p1, k2, p2, k3, p1; rep from \* 4 more times, k7, p1, k5.

Row 17: K5, yo, p2tog, p6, \*k1, p2, k2tog, k1, p2, yo, k1, yo, p2, k1, ssk, k2; rep from \* 4 more times, k1, p6, ssp, yo, k5.

Row 18: K13, p1, \*k2, p1, [k4, p1] twice, k2, p1; rep from \* 4 more times, k13.

Row 19: K5, p8, \*k1, p7, MB, p7; rep from \* 4 more times, k1, p8, k5.

Row 20: K13, p1, \*k15, p1; rep from \* 4 more times, k13.

Rep Rows 1–20 for pattern.

*Ending Tulip Pattern:* (multiple of 16 sts + 27)

Row 1 (RS): K5, p6, k2tog, yo, \*k1, yo, ssk, p11, k2tog, yo; rep from \* 4 more times, k1, yo, ssk, p6, k5.

Row 2: K11, \*p5, k11; rep from \* to end.

Row 3: K5, p5, k2tog, k1, yo, \*k1, yo, k1, ssk, p9, k2tog, k1, yo; rep from \* 4 more times, k1, yo, k1, ssk, p5, k5.

Row 4: K10, p7, \*k9, p7; rep from \* 4 more times, k10.

Row 5: K5, p4, k2tog, k2, yo, \*k1, yo, k2, ssk, p7, k2tog, k2, yo; rep from \* 4 more times, k1, yo, k2, ssk, p4, k5.

Row 6: K9, p2, k2, p1, \*k2, p2, k7, p2, k2, p1; rep from \* 4 more times, k2, p2, k9.

Row 7: K5, p3, k2tog, k1, p2, yo, \*k1, yo, p2, k1, ssk, p5, k2tog, k1, p2, yo; rep from \* 4 more times, k1, yo, p2, k1, ssk, p3, k5.

Row 8: K8, p1, k4, p1, \*k4, p1, k5, p1, k4, p1; rep from \* 4 more times, k4, p1, k8.

Row 9: K5, yo, ssp, p6, \*MB, p7, yo, ssp, p6; rep from \* 4 more times, MB, p6, p2tog, yo, k5.

Row 10: K5, p1, k8, \*k7, m1, k8; rep from \* 4 more times, k7, p1, k5.

Row 11: K7, yo, p2tog, p4, \*p5, p2tog, yo, k3, yo, p2tog, p4; rep from \* 4 more times, p5, p2tog, yo, k7.

Row 12: Rep Row 10.

Row 13: K5, yo, p2tog, p6, \*p7, ssp, yo, p7; rep from \* 4 more times, p7, ssp, yo, k5.

Row 14: Knit.

Work Rows 1–14 for pattern.

## NOTE

Circular needle is used to accommodate large number of sts; work back and forth in rows.

## BLANKET

With smaller needle, CO 107 sts. Work Gtr St for 10 rows, ending after a WS row. Change to larger needle and work Beginning Tulip Pattern for 6 rows, work 20-row rep of Center Tulip Pattern 7 times, then work 14 rows of Ending Tulip Patt. Change to smaller needle and work Gtr St for 9 rows, ending after a RS row. BO all sts knitwise.

## FINISHING

Weave in all loose ends. Machine wash in cold water on a gentle cycle in a lingerie bag. Recommended soaps are Dreft detergent or Soak wash. Lay flat to dry and block piece to required measurements.

*Tunney Wool Company*

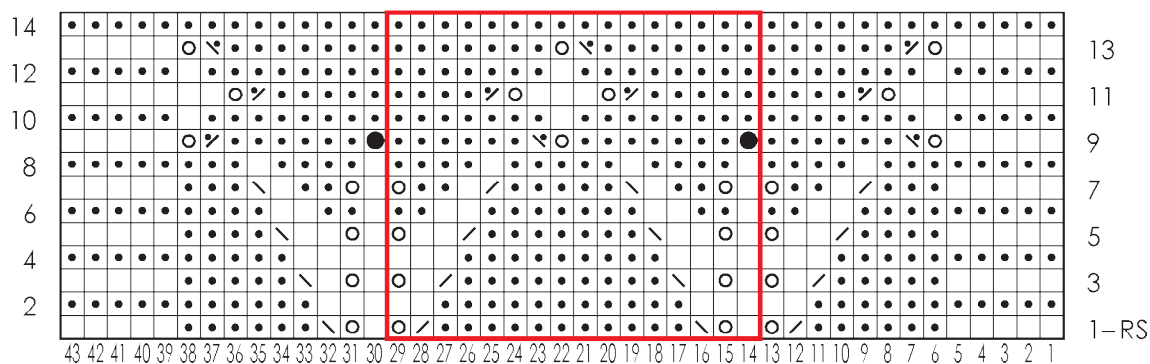
*p. 3*  
12/30/12

p 888.673.0260 - f 888.841.9736 - [info@tunneywoolcompany.com](mailto:info@tunneywoolcompany.com) - [www.o-wool.com](http://www.o-wool.com)

All efforts were made to make this pattern error-free. For questions or support, please email us. © Tunney Wool Company 2012 - Not to be reproduced or re-knit for profit.

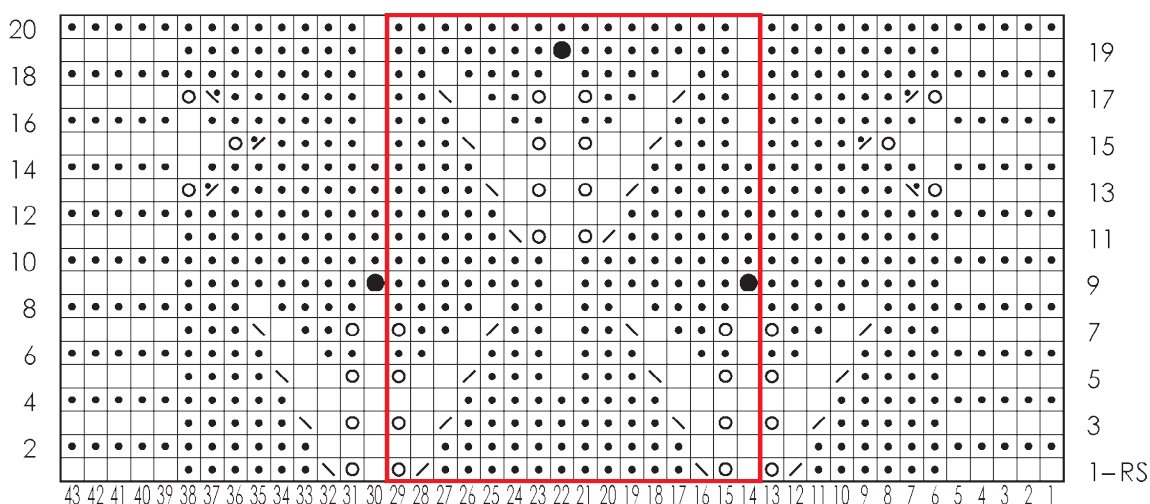
## Ending Tulip Chart

(multiple of 16 sts + 27; 16 rows)



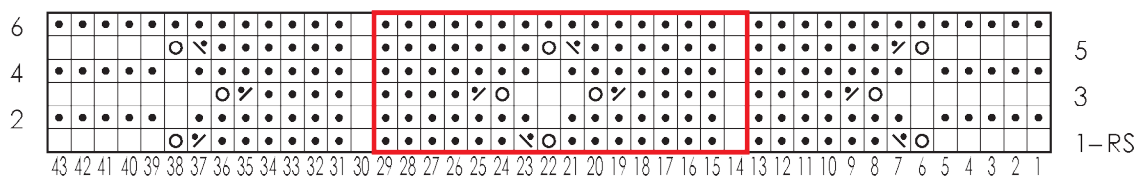
## Center Tulip Chart

(multiple of 16 sts + 27; 20 row rep)



## Beginning Tulip Chart

(multiple of 16 sts + 27; 6 rows)



- |   |   |
|---|---|
| <input type="checkbox"/> knit on RS, purl on WS | <input type="checkbox"/> ssk            |
| <input type="checkbox"/> purl on RS, knit on WS | <input type="checkbox"/> k2tog          |
| <input type="checkbox"/> yo                     | <input type="checkbox"/> MB             |
| <input type="checkbox"/> ssp                    | <input type="checkbox"/> pattern repeat |
| <input type="checkbox"/> p2tog                  |   |

*Tunney Wool Company*

p. 4  
12/30/12

p 888.673.0260 - f 888.841.9736 - info@tunneywoolcompany.com - www.o-wool.com

All efforts were made to make this pattern error-free. For questions or support, please email us. © Tunney Wool Company 2012 - Not to be reproduced or re-knit for profit.