

# Cotton Soft

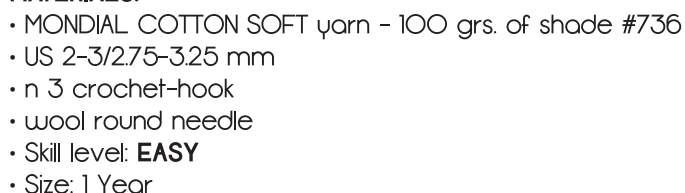


**MONDIAL®**  
Filati Lana & Cotone - ITALIA



#### **Mondial Patterns Disclaimer**

**Please note:** All Mondial patterns have been directly translated from the Italian originals and are provided solely as a guideline for using these yarns. All needle sizes are European and the instructions include notations different from their English equivalents. **Please review the pattern BEFORE starting the project.**





#### MATERIALS:

- MONDIAL COTTON SOFT yarn - 100 grs. of shade #920
- US 2-3/2.75-3.25 mm
- n 3 crochet-hook
- 19 in/50 cms of ribbon of the same color
- wool round needle
- Skill level: **EASY**
- Size: 1 Year



#### STITCHES

**Stocking Stitch. Open-work stitch:** (knitting on 9 sts.) see scheme.

**Using Crochet-hook:** chain st. (ch), single crochet (sc), slip stitch (sl st), double crochet (dc).

#### TENSION

10 x 10 cms.= 26 sts. and 30 r. in stocking stitch using n. 3 knitting needles

#### PATTERN

**Back:** using n. 3 knitting needles cast on 62 sts. and work 4 r. in stocking st. and 4 r. in open-work st. and then cont. in stocking st. At 15 cms. for the armholes shaping bind off 5 sts. and cont. to decr. 1 st., 2 sts. inwards, every 2 r. for twice. At 25 cms. bind off the 48 rem. sts.

**Right Front:** using n. 3 knitting needles cast on 30 sts. and work 4 r. in stocking st. 4 r. in open-work st. and then cont. working 8 r. in stocking st. and 4 r. in open-work st. for first 9 sts. and stocking st. for the rem. sts. At 15 cms. for the armhole, on the left, bind off 5 sts. and cont. decr. 1 st., 2 sts. inwards, every 2 r. for twice. At 16 cms., work in stocking st., and on the right, for the neckline shaping decr. 1 st., 2 sts. inwards, every 2 r. for 8 times. At 25 cms. bind off the rem. 8 sts. for the shoulder.

**Left Front:** work as given for right front, reversing all shaping.

**Sleeve:** using n. 3 knitting needles cast on 28 sts. and work 4 r. in stocking st. and 4 r. in open-work st. and then cont. in stocking st., incr. on both sides 1 st. every 4 r. for 5 times. At 13 cms. for the armholes bind off 3 sts. and cont. to decr. 1 st. every 2 r. for 6 times and 1 st. every r. for 6 times. At 20 cms. bind off the 8 rem. sts.

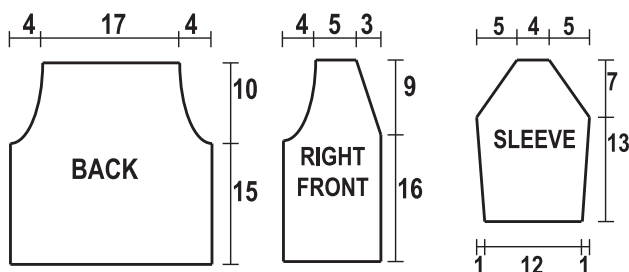
Make second sleeve as given for the first one.

#### FINISHING

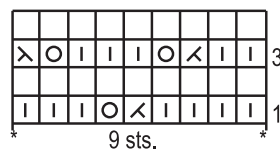
Sew the shoulders, assemble the sleeves, sew the sleeve and side seams.

**Trimming:** using n. 3 crochet-hook work 1 r. around the neckline, the edges of the fronts and the end of the back as foll.: \*in the same base st. work 1 sc, 3 ch., 2 dc, skip 2 base st.\*; rep. from \* to \* the entire r. and end with 1 sl st in the beg. st.

**Cuffs:** using n. 3 crochet-hook work around every cuff 1 r. of small fans, as worked around the neckline. Pass the ribbon through the holes of the neckline-band and knot with a bow.



#### OPEN-WORK ST. SCHEME



#### Key:

1 mesh correspond to 1 st. and 1 r.

□ = k1

◊ = k2tog

○ = yo1

⊗ = skp1

Even r.= purl

Rep. from \* to \* the entire r.

from 5<sup>^</sup> to 10<sup>^</sup> r. = stocking st.

11<sup>^</sup> r.= rep. from 1<sup>^</sup> r.



**MONDIAL®**  
Filati Lana & Cotone - ITALIA

COPYRIGHT © LANE MONDIAL





#### MATERIALS:

- MONDIAL COTTON SOFT yarn - 50 grs. of shade #920
- US 2-3/2.75-3.25 mm
- n 3 crochet-hook
- wool round needle
- Skill level: **EASY**
- Size: 1 Year



#### STITCHES

**Stocking Stitch. Open-work stitch:** (knitting on 9 sts.) see scheme.

**Using Crochet-hook:** chain st. (ch), single crochet (sc), slip stitch (sl st), double crochet (dc).

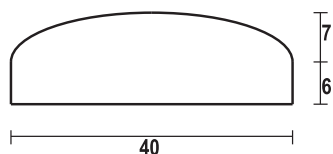
#### TENSION

10 x 10 cms.= 26 sts. and 30 r. in stocking stitch using n. 3 knitting needles

#### PATTERN

Using n. 3 knitting needles cast on 100 sts. and work 4 r. in stocking st, 4 r. in open-work st., 4 r. in stocking st., 4 r. in open-work st. and then cont. in stocking st. At 6 cms. decr. 4 sts. properly distributed, every 2 r. for 8 times and every r. for 15 times. Pass the thread through rem. 4 sts., tighten and sew in round.

Band: using n. 3 crochet-hook make 1 r. around the edge as foll.: \*in the same base st. work 1 sc, 3 ch, 2 dc, skip 2 base sts.\*; rep. from \* to \* the entire r. and end with 1 sl st in the beg. st.



**MONDIAL®**  
Filati Lana & Cotone - ITALIA

COPYRIGHT © LANE MONDIAL