



## Owl Dishcloth



INTERMEDIATE

### MEASUREMENTS

Approx 9" [23 cm] wide x 8" [20.5 cm] long.

### GAUGE

20 sts and 26 rows = 4" [10 cm] in stocking st.

### MATERIALS

Lily® Sugar'n Cream® (2.5 oz/70.9 g; 120 yds/109 m)

**Main Color (MC)** Ecru (00004) **1 ball or 77 yds/70 m**

**Contrast A** Wine (00015) **1 ball or 29 yds/26 m**

**Contrast B** Country Red (01530) **1 ball or 44 yds/40 m**

**Contrast C** Tangerine (01699) **1 ball or 33 yds/30 m**

Size U.S. 7 (4.5 mm) knitting needles **or size needed to obtain gauge.**

### INSTRUCTIONS

**Note:** When working from Chart, wind small balls of the colors to be used, one for each separate area of color in the design. When changing colors, wind the 2 colors around each other where they meet, on WS, to avoid a hole.

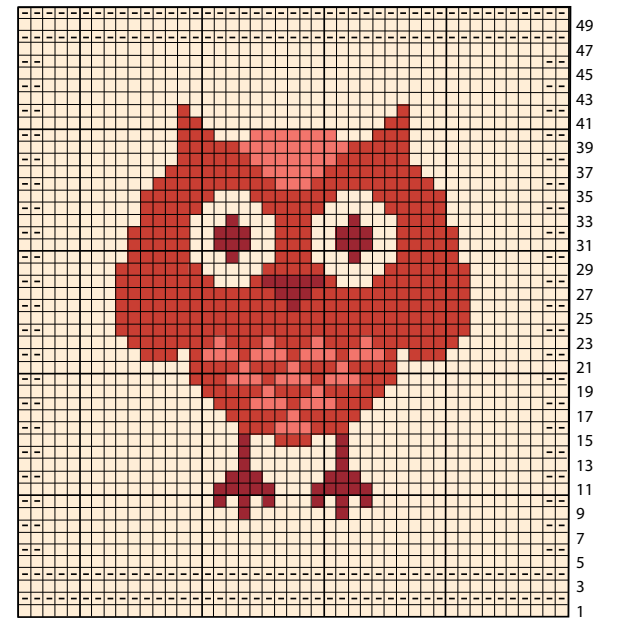
With MC, cast on 45 sts.

Work rows 1 to 50 of Chart, reading

**RS** rows from **right to left** and **WS** rows from **left to right**.

With A, cast off knitwise (WS).

Chart



Key

□ = With MC, knit on RS rows. Purl on WS rows.

◻ = With MC, purl on RS rows. Knit on WS rows.

■ = With A, knit on RS rows. Purl on WS rows.

■ = With B, knit on RS rows. Purl on WS rows.

◻ = With C, knit on RS rows. Purl on WS rows.

Start Here

**ABBREVIATIONS:** [www.yarnspirations.com/abbreviations](http://www.yarnspirations.com/abbreviations)

**Approx** = Approximately

**St(s)** = Stitch(es)

**RS** = Right side

**WS** = Wrong side