



LET'S KNIT EXCLUSIVE GARMENT PATTERN

Ramona is a stunning *silk blend* jumper that will stifle spring chills – and no *sewing up* necessary!

Anniken Allis's gorgeous marigold jumper is perfect for spring in both colour and style, and the luxurious yarn provides a decadent-feeling surface. Ramona requires no needlework – the sweater is knitted in the round to the armhole and the front and back are knitted separately and the shoulders joined by working a three needle cast off. The stitches for the sleeves are then picked up around the armhole and the sleeve caps are shaped by working short rows and knitting the sleeves in the round. With no sewing up needed, simply weave in the ends for an overall neater make!

START KNITTING ON P44

NO
SEWING
UP
NEEDED

knitwise

WRAPPING ON SHORT ROWS:

W&t on k rows: take the yarn between the needles to the front, sl the next st from the LH needle to the RH needle pwise, take the yarn between the needles to the back, sl the st back to the LH needle. Turn.

W&t on p rows: take the yarn between needles to the back, sl the next st from the LH needle to the RH needle pwise, take the yarn between the needles to the front, sl the st back to LH needle. Turn.

K st & wrap tog on a k row: insert RH needle up through the wrap then into the st and k both tog.

P st & wrap tog on a p row: from the k side lift the wrap and place it in front of the p st, p st and wrap tog.

MEASUREMENTS & SIZES

Dress size (approx):

8-10 (12-14, 16-18, 20-22)

To fit chest (cm):

86 (97, 107, 117)

Actual chest (cm):

90 (101, 110, 121)

Length (cm):

55 (56, 57.5, 58.5)

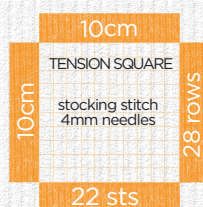
KNIT KIT

Yarn: Manos del Uruguay Silk Blend Fino, shade 2220 Topaz, 3 (4, 5, 6) 50g balls

Needles: 3.5mm circular, 80cm or 100cm long for body, 60cm long for sleeves and neck band

Stitch markers: two

Stitch holder or waste yarn



SPECIAL ABBREVIATIONS

sm: stitch marker

w&t: wrap and turn

ABOUT THE YARN

Manos del Uruguay Silk Blend Fino is a luxurious blend of 70% merino wool and 30% silk, hand-dyed in large kettles. This decadent yarn is available in 21 gorgeous shades, both solid and variegated.

Need an alternative yarn?

Artesano 4ply is a beautifully soft 100% alpaca yarn and more cost effective than the Manos del Uruguay Silk Blend Fino. Available in 22 strong shades, the yarn gives a wonderful stitch definition when knitted up.

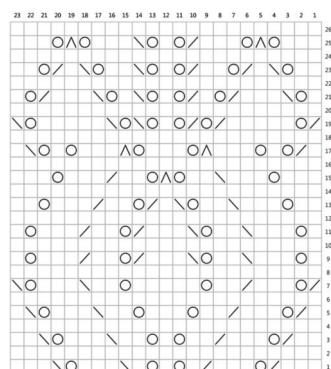
FOR ABBREVIATIONS SEE PAGE 88

key

□ RS: k, WS: p

△ sl 1, k2tog, pssso ▽ k2tog

○ yfwd ◻ ssk



Written instructions

□ Rnd 1: k3, k2tog, yfwd, k3, k2tog, [k1, yfwd] twice, k1, ssk, k3, yfwd, ssk, k3

□ Rnd 2 and all even rnds: k to end

□ Rnd 3: k2, k2tog, yfwd, k3, k2tog, k2, yfwd, k1, yfwd, k2, ssk, k3, yfwd, ssk, k2

□ Rnd 5: k1, k2tog, yfwd, k3, k2tog, k2, yfwd, k3, yfwd, k2, ssk, k3, yfwd, ssk, k1

□ Rnd 7: k2tog, yfwd, k3, k2tog, k2, yfwd, k5, yfwd, k2, ssk, k3, yfwd, ssk

□ Rnd 9: k1, yfwd, k3, ssk, k2, yfwd, ssk, k3, k2tog, yfwd, k2, k2tog, k3, yfwd, k1

□ Rnd 11: k1, yfwd, k3, ssk, k2, yfwd, ssk, k3, k2tog, yfwd, k2, k2tog, k3, yfwd, k1

□ Rnd 13: k2, yfwd, k3, ssk, k2, yfwd, ssk, k1, k2tog, yfwd, k2, k2tog, k3, yfwd, k2

□ Rnd 15: k3, yfwd, k3, ssk, k2, yfwd, sl 1, k2tog, pssso, yfwd, k2, k2tog, k3, yfwd, k3

□ Rnd 17: k1, k2tog, yfwd, k1, yfwd, k3, sl 1, k2tog, pssso, yfwd, k3, yfwd, sl 1, k2tog, pssso, k3, yfwd, k1, yfwd, ssk, k1

□ Rnd 19: k2tog, yfwd, k5, [k2tog, yfwd] twice, k1, [yfwd, ssk] twice, k5, yfwd, ssk

□ Rnd 21: k1, yfwd, ssk, k3, [k2tog, yfwd, k1] twice, yfwd,

ssk, k1, yfwd, ssk, k3, k2tog, yfwd, k1

□ Rnd 23: k2, yfwd, ssk, k1, k2tog, yfwd, k2, k2tog, yfwd, k1, yfwd, ssk, k2, yfwd, ssk, k1, k2tog, yfwd, k2

□ Rnd 25: k3, yfwd, sl 1, k2tog, pssso, yfwd, k3, k2tog, yfwd, k1, yfwd, ssk, k3, yfwd, sl 1, k2tog, pssso, yfwd, k3

Body

NOTE: Body starts in the rnd then is split at armhole with front and back worked separately. Watch your tension when you go from knitting in the rnd to back and forth to make sure it stays consistent. Any meas on back should be taken along the side of the sweater.

Using long circular needle, cast on 198 (222, 242, 266) sts, join to work in the rnd being careful not to twist sts, place a st marker at the beg of the rnd and after 99 (111, 121, 133) sts to mark side seam

□ Rnd 1: k to end

□ Rnd 2: p to end

□ The last two rnds set patt for garter st

SHAPE CURVED BACK HEM

□ Row 3: k to ten sts before end of rnd marker, w&t

□ Row 4: k to ten sts before side marker, w&t

□ Row 5: k to ten sts before wrapped st, w&t

□ Row 6: k to ten sts before wrapped st, w&t

□ Rep last two rows once more, k to end of rnd

□ Next rnd: start k in the rnd in garter st and work four more rnds

Commence st st:

□ Rnd 1: k38 (44, 49, 55), work chart, k38 (44, 49, 55), sm, k38 (44, 49, 55), work chart, k38 (44, 49, 55)

Last rnd sets patt

□ Work ten rnds without shaping

SHAPE WAIST

□ Next round: k1, ssk, work in patt to three sts before marker, k2tog, k1, sm, k1, ssk, work in patt to three sts before marker, k2tog, k1

□ Work five rnds without shaping

□ Rep last six rnds five more times. 174 (198, 218, 242) sts rem

□ Work ten rnds without shaping

□ Next rnd: k1, m1, work in patt to one st before marker, m1, k1, sm, k1, m1, work in patt to one st before end, m1, k1

□ Work seven rnds without shaping

□ Rep last eight rnds five more times. 198 (222, 242, 266) sts

□ Cont without shaping until body meas 37 (36.5, 37, 37) cm ending with an even rnd

□ Place last sts of rnd for front on hold. Cont on first sts for back. 99 (111, 121, 133) sts

Back

SHAPE ARMHOLES

□ Cast off 5 (6, 7, 8) sts at beg of next two rows. 89 (99, 107, 117) sts

□ Next row (RS): k2, ssk, work in patt to last four sts, k2tog, k2

□ Next row (WS): p2, p2tog, p to last four sts, p2tog tbl, p2

□ Rep last two rows 0 (1, 2, 3) more times. 85 (91, 95, 101) sts

□ Rep RS dec row only twice more. 81 (87, 91, 97) sts

□ Cont without shaping until back meas 53.5 (54.5, 56, 57) cm ending with a WS row

SHAPE RIGHT NECK

□ Next row (RS): k25 (27, 28, 31), turn

□ Next row (WS): p1, p2tog, p to end

□ Next row: k to last three sts, k2tog, k1

□ Rep last two rows once more. 21 (23, 24, 27) sts

SHAPE RIGHT SHOULDER

□ Next row (WS): p14 (15, 16, 18), w&t

□ Next row (RS): k to end

□ Next row: p7 (7, 8, 9), w&t

□ Next row: k to end

□ Next row: p to end incl wraps as they appear

Place sts on holder

"This sweater is knitted in the round to the armhole, with the front, back and shoulders joined by working a three needle cast off. To make up all you have to do is weave in the ends!"



LK DESIGNER ANNIKEN ALLIS



Manos del Uruguay Silk Blend Fino costs £8 per 50g (225m) skein from 01782 397248, www.pollyjaneyarns.co.uk

Artesano 4ply costs £4.95 per 50g (184m) skein from 01603 622553, www.craftyewe.co.uk



SHAPE LEFT NECK

- Place centre 31 (33, 35, 35) sts on holder, reattach yarn and k to end. 25 (27, 28, 31) sts
- Next row (WS): p to last three sts, p2tog tbl, p1
- Next row (RS): k1, ssk, k to end
- Rep last two rows once more. 21 (23, 24, 27) sts

- Next row (WS): p to end

SHAPE LEFT SHOULDER

- Next row (RS): k14 (15, 16, 18), w&t
- Next row (WS): p to end
- Next row: k7 (7, 8, 9), w&t
- Next row: p to end
- Next row: k to end incl wraps as they appear
- Place sts on holder

Front

Reattach yarn at front edge ready to work a RS row

SHAPE ARMHOLES

- Cast off 5 (6, 7, 8) sts at beg of next two rows. 89 (99, 107, 117) sts
- Next row (RS): k2, ssk, work in patt to last four sts, k2tog, k2
- Next row (WS): p2, p2tog, p to last four sts, p2tog tbl, p2
- Rep last two rows 0 (1, 2, 3) more times. 85 (91, 95, 101) sts
- Rep RS dec row only twice more. 81 (87, 91, 97) sts
- Cont without shaping until front meas 42 (42, 43, 43.5) cm ending with a WS row

SHAPE RIGHT NECK

- Next row (RS): k26 (28, 29, 31), turn
- Next row (WS): p1, p2tog, p to end
- Next row: k to last three sts, k2tog, k1
- Rep last two rows 1 (1, 1, 1) more time
- Rep RS dec row only 1 (1, 1, 0) more times. 21 (23, 24, 27) sts
- Cont without shaping until Front matches Back to Shoulder shaping, ending with a RS row

SHAPE RIGHT SHOULDER

- Next row (WS): p14 (15, 16, 18), w&t
- Next row (RS): k to end
- Next row: p7 (7, 8, 9), w&t
- Next row: k to end
- Next row: p to end incl wraps as they appear
- Place sts on holder

SHAPE LEFT NECK

- Place centre 29 (31, 33, 35) sts on holder
- Reattach yarn and k to end. 26 (28, 29, 31) sts
- Next row: p to last three sts, p2tog tbl, p1
- Next row: k1, ssk, k to end
- Rep last two rows 1 (1, 1, 1) more times
- Rep RS dec row only 1 (1, 1, 0) more time. 21 (23, 24, 27) sts
- Next row: p to end

SHAPE LEFT SHOULDER

- Next row (RS): k14 (15, 16, 18), w&t
- Next row (WS): p to end
- Next row: k7 (7, 8, 9), w&t
- Next row: p to end

- Next row: k to end incl wraps as they appear

- Place sts on holder
- Join shoulders by working a three needle cast off on the WS

Sleeves

- With RS facing and starting at underarm, pick up and k 5 (6, 7, 8) sts at underarm cast off, pick up and k 30 (32, 36, 37) sts to shoulder, pick up and k 30 (32, 36, 37) sts between Shoulder and underarm, pick up and k 5 (6, 7, 8) sts at underarm cast off. 70 (76, 86, 90) sts. Join to work in the rnd, pm at centre of cast off underarm sts
- Row 1: k47 (51, 57, 60), w&t (should be 12 (13, 14, 15) sts past shoulder point)
- Row 2: p24 (26, 28, 30), w&t (should be 12 (13, 14, 15) sts past shoulder point)
- Row 3: k to wrapped st, k st & wrap tog, w&t
- Row 4: p to wrapped st, p st & wrap tog, w&t
- Rep last two rows until only underarm sts rem unworked
- Next row (RS): k to underarm sts, k across underarm sts to marker, continue to k in the rnd around armhole
- Work two rnds
- Next rnd: k1, k2tog, k to last three sts, ssk, k1
- Work five rnds without shaping
- Rep last six rnds 6 (5, 6, 4) more times. 56 (64, 72, 80) sts
- Cont without shaping until sleeve meas 19 (20, 21, 22) cm from underarm
- Work four rnds garter st
- Cast off

Neck band

- Starting at left shoulder, pick up and k 31 (33, 35, 37) sts to front neck, k29 (31, 33, 35) sts from front neck, pick up and k 31 (33, 35, 37) sts to right shoulder, pick up and k 6 (6, 6, 6) sts to back neck, k31 (33, 35, 35) sts from back neck, pick up and k 6 (6, 6, 6) sts to left shoulder. Join to work in the rnd. 134 (142, 150, 156) sts
- Rnd 1: p to end
- Rnd 2: k to end
- Rnd 3: p to end
- Cast off
- Weave in all loose ends and block to measurements **LK**



Ramona features lace detail on the front and back

Vest top £9.99, TK Maxx, Skirt £34 Topshop, tights £3.99 H&M