



BERNAT® SNOWFLAKE HAT | KNIT



EASY

SIZE

One size to fit average woman's head.

GAUGE

11 sts and 14 rows = 4" [10 cm] in stocking st.

MATERIALS

Bernat® Softee® Chunky™ (5.3 oz/150g; 161 yds/147 m)

Main Color (MC) Cranberry Sauce (85532) **1 ball**

Contrast A Santa's Beard (85021) **1 ball**

Size U.S. 11 (8 mm) knitting needles **or size needed to obtain gauge.** Stitch marker. Yarn needle.

ABBREVIATIONS: www.yarnspirations.com/abbreviations

Beg = Beginning

K = Knit

K2tog = Knit next 2 stitches together

Pm = Place marker

Rem = Remain(ing)

Rep = Repeat

RS = Right side

St(s) = Stitch(es)

Tog = Together

WS = Wrong side

INSTRUCTIONS

With MC, cast on 57 sts.

Beg with a knit row, proceed in stocking st until work from beg measures 7"[18 cm], ending on a purl row.

Shape crown: 1st row: (RS). K1. *K2tog. K6. Rep from * to end of row. 50 sts.

2nd and alt rows: Purl.

3rd row: K1. *K2tog. K5. Rep from * to end of row. 43 sts.

5th row: K1. *K2tog. K4. Rep from * to end of row. 36 sts.

7th row: K1. *K2tog. K3. Rep from * to end of row. 29 sts.

9th row: K1. *K2tog. K2. Rep from * to end of row. 22 sts.

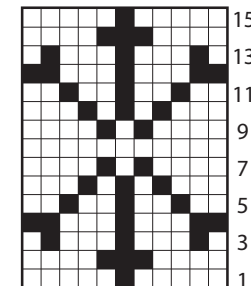
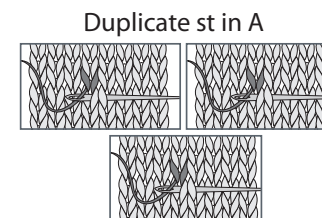
11th row: K1. *K2tog. K1. Rep from * to end of row. 15 sts.

12th row: P1. *P2tog. Rep from * to end of row. 8 sts.

Break yarn, leaving a long end. Thread end through rem 8 sts. Draw up and fasten securely.

Finishing: Pm in center front st 6 rows above cast on edge. Using yarn needle and A, work snowflake motif in Duplicate St from chart.

Sew center back seam.



Key

■ = With A, duplicate st