

Design S8076 • Ladies' Dress

Directions for sizes are given in ascending order, separated by hyphens. If there is only one figure, it applies to all sizes.

Materials: Schachenmayr/SMC Catania, 300-300-350-350-400g #00258 strawberry, 200-250-250-300-300g #00242 grey, 100-100-150-150-200g #00263 apricot, 50-50-100-100-100g #00249 gold. US 2-5 [2.75-3.75 mm] needles, one US 1-3 [2-3 mm] circular needle each 16" [40 cm] and 32" [80 cm] long, **or size to obtain gauge.**

Rib pattern: alt K2, P2.

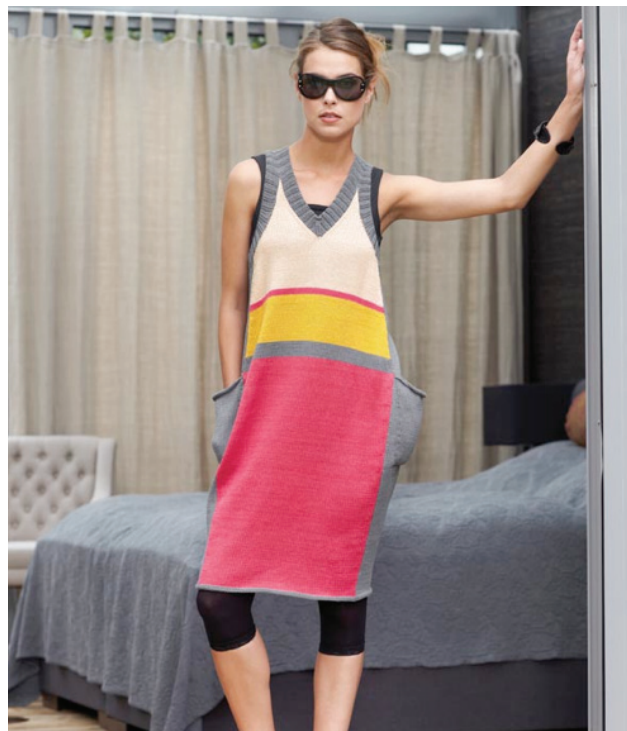
Stockinette stitch: K RS rows; P WS rows.

Gauge: with 2.75-3.75 mm needles and stst 26 sts and 33 rows, each to 4" [10cm].

METHOD

Back: with 2.75-3.75 mm needles and strawberry cast on 74-86-98-112-124 sts and work in st-st; start with 1 WS row. For side shaping inc at each end 1 st on 10th (RS) row from cast-on once, then 1 st on every 12th row 12 times = 100-112-124-138-150 sts. To inc work at beg of row selvage st and 1 in patt, then M1k tbl; work to 2 from end of row, then M1k tbl, K1, selvage st.

When work measures 19¾" [50cm], after 165 rows, work 10 rows grey, 30 rows gold and 4 rows strawberry = 5¼" [13.5 cm] st-st, then cont to end with st-st and apricot. At the same time dec at each end for side shaping on 1st (RS) row grey 1 st once, then



*1 st on every 6th row 2 times and 1 st on 4th row once, rep 3 times from * = 74-86-98-112-124 sts. For side shaping dec as foll: at beg of row work selvage st and K1, then K2tog; work to 4 from end of row, then skp (= sl1k, K1,psso), K1, selvage st. When work measures 9¼-9¼-9-8½-8" [23.5-23.5-22.5-22-20.5cm] from start of panel with grey bind off for armholes at each end 3 sts once, then 3 sts on every 2nd row 2-3-5-7-8 times, then dec 2 sts at each end 7-10-9-9-10 times as for upper side shaping. Cont

even across rem 42- 42-44-46-50 sts until work measures 36" [91.5 cm], then bind off all sts.

Front: proceed as for back except for neck. When work measures 9¼-9¼-9-8½-7¾" [23.5-23.5-22.5-22-20.5 cm] from start of grey panel, or tog with start of armhole shaping, leave 2 sts at center on a holder for

Size Table for Dress

Size	XS	S	M	L	XL
Back and front					
Lower width (cm / inch)	28 / 11"	32 / 12½"	37 / 14½"	42 / 16½"	47 / 18½"
Width after side incs (cm / inch)	38 / 15"	42 / 16½"	47 / 18½"	52 / 20½"	57 / 22½"
Width at underarm (cm / inch)	28 / 11"	32 / 12½"	37 / 14½"	42 / 16½"	47 / 18½"
Height to Underarm (cm / inch)	73.5 / 29"	73.5 / 29"	72.5 / 28¾"	72 / 28¼"	70.5 / 27¾"
Width of armhole (cm / inch)	6 / 2¼"	8 / 3¼"	10 / 4"	12 / 4¾"	14 / 5½"
Back, height of armhole (cm / inch)	18 / 7"	18 / 7"	19 / 7½"	19.5 / 7¾"	21 / 8¼"
Front, height of armhole (cm / inch)	12 / 4¾"	12 / 4¾"	13 / 5¼"	13.5 / 5¼"	15 / 6"
Width of neck (cm / inch)	16 / 6¼"	16 / 6¼"	17 / 6¾"	18 / 7"	19 / 7½"
Front, V-neck (cm / inch)	12 / 4¾"	12 / 4¾"	13 / 5¼"	13.5 / 5¼"	15 / 6"
Back, total height (cm / inch)	91.5 / 36"	91.5 / 36"	91.5 / 36"	91.5 / 36"	91.5 / 36"
Front, total height (cm / inch)	85.5 / 33½"	85.5 / 33½"	85.5 / 33½"	85.5 / 33½"	85.5 / 33½"
Side panels					
Lower side panel, width (cm / inch)	20 / 7¾"	20 / 7¾"	20 / 7¾"	20 / 7¾"	20 / 7¾"
Lower side panel, height (cm / inch)	50 / 19¾"	50 / 19¾"	50 / 19¾"	50 / 19¾"	50 / 19¾"
Upper side panel, width (cm / inch)	14 / 5½"	14 / 5½"	14 / 5½"	14 / 5½"	14 / 5½"
Upper side panel, height to divide (cm / inch)	39.5 / 15½"	39.5 / 15½"	38.5 / 15¼"	38 / 15"	36.5 / 14¾"
Upper side panel, total height (cm / inch)	43.5 / 17¼"	43.5 / 17¼"	42.5 / 16¾"	42 / 16½"	40.5 / 16"

V-neck and finish each side sep.

At neck edge dec 1 st on 4th foll row once, then 1 st on every 2nd row 16-16-17-18-20 times as foll: across right panel work to 4 from end of row, then skp, K1, selvage st; across left panel work selvage st and K1, then K2tog; work rem sts in patt. On 2nd foll row bind off rem 3 sts.

Lower side panel: with 2.75-3.75 mm needles and grey cast on 54 sts and work in st-st; 1st row = WS row.

When work measures 19¾" [50cm], or after 165 rows, bind off all sts. Work both lower side panels alike.

Upper side panel: with 2.75-3.75mm needles and grey cast on 38 sts and work in st-st; start with 1 WS row.

When work measures 15½-15½-15¼-15- 14¼" [39.5-39.5-38.5-38-36.5cm] bind off 2 sts at center and finish each side sep. At bound-off edge bind off 3 sts on every 2nd row 6 times.

Total height of work 17-17-16¾-16½-16" [43.5-43.5-42.5-42-40.5cm].

Work both upper side panels alike.

Finishing: block pieces to measurements, cover with a damp cloth and allow to dry.

Sew 9¼-9¼-8¾-8½-8" [23.5-23.5-22.5-22-20.5cm] at upper edge of upper side panels to corresponding side edges of front and back, see * and o in Line

Chart. Sew side edges of lower side panels to corresponding strawberry side edges of front and back. On inside of dress sew rem side edges and cast-on edge of upper side panels to lower side panels, forming a pocket, allow the opening edges of pockets roll out.

With the long 2-3mm circular needle cast on with grey for neck band and straps 21-25-25-25-25 sts, pick up across outer edge of right (when worn) neck edge of front 40-40-44-46-50 sts, K2 at lower front neck edge, work 40-40-44-46-50 sts into adjoining neck edge, cast on 21-25-25-25-25 sts = 1234-132-140-144-152 sts.

Cont with Rib Patt; on RS rows K2 at center throughout, on WS rows P2 at center, and on 1st (WS) row start with selvage st, P2; work alt K2, P2 to the 2 center sts, P2 at center, work rem sts in reverse. At the same time, on every RS row work to 1 from the 2 center sts, then K2tog, sl1k, K1, psso.

When work measures 1¼" [3.5 cm] bind off all sts. Sew side edges of band to 1¼" [3.5 cm] at outer edge of back neck edge.

For each armhole band pick up with the short circular needle and grey across outer front armhole edge 44-48-56-64-68 sts, pick up 20-24-24-24-24 sts across edge of strap and 60-64-72-80-88 sts across back armhole edge = 132-136- 144-152-160 sts altog and work in Rib Patt until band measures 1¼" [3.5cm], then bind off all sts.

With the long circular needle and grey pick up across outer lower edge of dress 244- 268-292-320-344 sts and for narrow roll edge P 5 rnds, then bind off all sts.

